

# Garbage

From Friday, April 1st, 2011

## Sorting-out Classification Partially Changes

Your understanding and cooperation would be appreciated.

### Gas lighter



### Spray can Gas cartridge

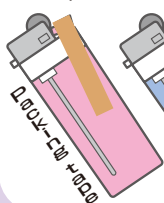


Changes to

### Ignitable waste is newly classified as Dangerous waste

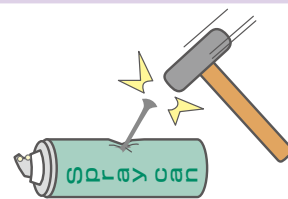
Use up a gas lighter or remove gas from it outside the house and away from fire.

#### Example of removing gas



- ◆ Press down and hold the lever with rubber band or tape.
- ◆ Leave it outside the house and away from fire for half a day or a day.

Do not forget to punch a hole on spray cans and gas cartridge before disposing them. Open the hole outside the house and away from fire.



Put these garbage out



### At recycle stations

(excluding Umetsubo-cho, Hourai-cho and Wakabayashi higashi-machi)

or

### on the day of collection of recyclable resources.



Put these garbage out

### Cosmetic bottles



Landfill garbage

Changes to

### Glass bottles(resources)

#### Collectable items : Glass items

##### ① Remove caps and the like.

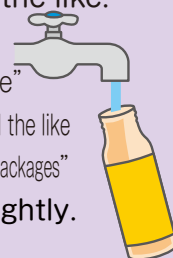
Metallic caps

→ "Metallic garbage"

Plastic caps, inside plugs and the like

→ "Plastic containers and packages"

##### ② Rinse with water lightly.



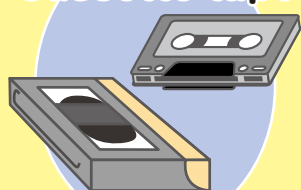
Most cosmetic bottles are now recyclable as resources !

#### Excluded items (to be collected as "Landfill garbage")

- ① Items with contents remaining
- ② Items that are not rinsed with water
- ③ Items combined with other materials (rigid plastic, metals, and the like) or items with parts (caps, pumps, and the like) made of other materials attached
- ④ Broken items
- ⑤ Milky white items (bottles with milky white mouth)



### Videotapes Cassette tapes



Metallic garbage

Changes to

### Combustible garbage

To promote efficient metal collection, these items are changed to "Combustible garbage". Metals are collected in the disposing process of combustible garbage.



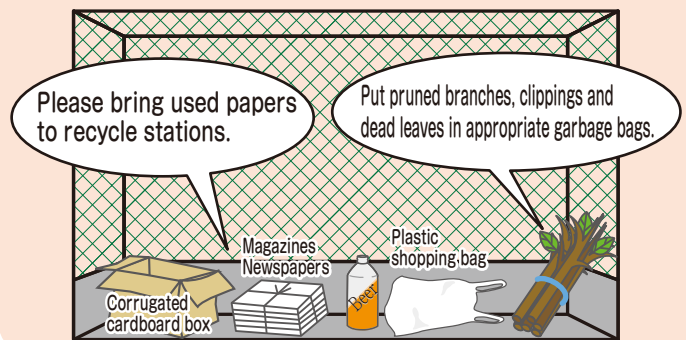
# Let's follow the rules of disposing garbage.

## Four rules of disposing garbage

- ◆ Sort out your garbage appropriately.
- ◆ Put your garbage out by 8:30 am on designated day.
- ◆ Bring your garbage to the designated garbage station.
- ◆ Use appropriate garbage bags.



## Garbage not in appropriate garbage bags is not collected.



## News on garbage

### Fire extinguishers are changed from "Metallic garbage" to "Items that the city cannot dispose"

Since the "recycle system of waste fire extinguishers" has started working, classification is changed to "items that the city cannot dispose" (uncollectible items), the same as personal computers, tires, batteries and the like.

#### For information and consultation :

Toyota Bousai	1-69-26 Aoki-cho, Toyota city	☎ 45-8119
Miyake Shouten	1249 Fujiokaiino-cho, Toyota city	☎ 76-2226
Toyota Drychemical	Nishikawa Bldg. 13-8 Kozaka-cho, Toyota city	☎ 32-7313
Naigai Guard	23-18 Kakenoue, Takasaki-cho, Toyota city	☎ 32-1181
TB Technogreen	8-54 Obayashi-cho Toyota city	☎ 29-1381
Daiichi Bousai	64 Maeyashiki, Sumiyoshi-cho, Toyota city	☎ 52-2562

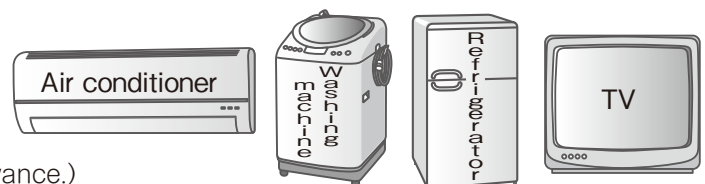


## Collection of 4 kinds of electric appliances at Green Clean Fujinooka ends.

Collection at Green Clean Fujinooka of 4 kinds of electric appliances (air conditioners, TVs, refrigerators and freezers, and washing machines and dryers) bearing a recycle tag (sticker) will cease on March 31st, 2011. Please follow either way to dispose from April 1st.

- ◆ Request home appliance retailer or electronics retail store for picking up.  
(Price includes recycle fee.)

- ◆ Bring items directly to designated place.  
(Attach the recycle tag (sticker) \* on each item in advance.)



※The recycle tag (sticker) is issued by paying a recycle fee at a post office. Recycling fee varies depending on the manufacturer or size of item. Please ask appliance recycle tag center for details. ☎0120-319640 <http://www.rkc.aeha.or.jp/>

#### [Neighbor designated places]

Toei Corporation	Nagoya east office	834 Kibutake, Nagakute-cho, Aichi district	☎0561-64-5031
Toei Corporation	Okazaki business office	16-1 Aza-tateishi Ohira-cho Okazaki-city	☎0564-65-5181
Nittsu Mikawa Unyu	Okazaki business office	51 Aza-kakeshita Ohira-cho Okazaki-city	☎0564-22-8655
Seino Transportation	Nagoya east branch	1-12 Minowa, Asada-cho, Nisshin city	☎052-807-0924

#### Design of designated garbage bag will change.

Garbage bag design without pictures will be available from April, 2011. Current designated garbage bags can be used, too.